



VOGUE

CATTLE CO.

"Genetics By Design"



December 2020

On Top Of The World!

A2P2-PP

#1 GPA-LPI "PP"
Bull in the World

PICASSO-PP

#1 TYPE "PP"
Bull in CDN & USA

NIPIT-PP

#1 GTPI "PP"
Bull in the World



Vogue **A2P2-PP**

724HO02004 CANM13446574 A2A2 / AB
+3500 GPA-LPI +1047 M +109 F +0.63% +10 Conf
Luster P x Duke from 15 generations VG or EX

Vogue **PICASSO-PP** *RC


724HO02010 CANM40001178 A2A2 / AB
+1526 M +16 CONF. / +2.92 PTAT
Mirand PP x Loyola P from 9 generations VG or EX

Vogue **NIPIT-PP** *RC

724HO02005 CANM40001169 A2A2 / BB
+3433 GPA LPI +1178 M +102 F +0.50% +9 Conf
Hotspot P x Splendid P from 14 generations of VG or EX

12-20 Proofs

In addition to siring offspring without horns, these bulls correct some major concerns in the breed today. They sire ideal to sloped rumps; ideal set to some curve in rear leg and ideal to longer teats. You CAN have it all!

1925, Cty Rd. 26, Brighton
ON K0K 1H0, Canada
(+1) 905-866-7800
info@voguecattle.com 


VOGUE
CATTLE CO.

2020-P

VOGUE 2020-P

724HO02020 HOCANM40001163 A2A2 / BB



HOTSPOT P x SPLENDID SAMARA-PP (VG-86 2yr) x POWERBALL SALINA P (EX-90) x UNO SANGARIA (VG-85 2yr 6*)



905-866-7800 • info@voguedcattle.com 

724HO02020 2020-P

HOCANM40001163 **A2A2 / BB**
HOTSPOT P x SPLENDID x POWERBALL

12/2020 CDCB SUMMARY GENOMIC			NM\$ +609	
Milk	+864	77%R	Fluid Merit \$	+526
Fat	+72	+0.13%	Cheese Merit \$	+648
Protein	+50	+0.08%	Grazing Merit \$	+595
SCS	3.04	74%R	Gestation Len. -1	Fert. Index +2.1
PL	+2.7	73%R	Livability -0.5	Mastitis -0.9
DPR	+1.7	73%R	EFI 8.6%	gEFI 11.2%
HCR	+2.2			
CCR	+2.3		0 Dtrs 0 Herds	100% US

12/2020 CALVING SUMMARY			SCE 1.8 %	
Sire Calving Ease	1.8%	61%R	0 Obs	
Daughter Calving Ease	2.0%	55%R	0 Obs	
Sire Stillbirth	4.9%	55%R	0 Obs	
Daughter Stillbirth	4.6%	53%R	0 Obs	

12/2020 HA TYPE SUMMARY			TPI +2785		
PTAT +1.44	74%R	UDC+1.45	FLC+0.26	BSC-0.33	0 D / 0 H
Stature	+1.38	Tall			
Strength	+0.05	Strong			
Body Depth	+0.46	Deep			
Dairy Form	+1.74	Open Rib			
Rump Angle	+0.29	Sloped			
Thurl Width	+0.56	Wide			
Rear Legs-Side	+0.61	Sickle			
Rear Legs-Rear	-0.16	Hock In			
Foot Angle	+0.23	Steep			
Feet & Legs Score	+0.77	High			
F. Udder Attachment	+1.87	Strong			
Rear Udder Height	+2.28	High			
Rear Udder Width	+2.08	Wide			
Udder Cleft	+0.51	Strong			
Udder Depth	+1.53	Shallow			
Front Teat Placement	+0.30	Close			
Rear Teat P. Rear	+0.00	Close			
Teat Length	+0.99	Long			



VOGUE 2020-P
724HO02020 HOCANM40001163 **A2A2 / BB**
HOTSPOT P x SPLENDID x POWERBALL



Dam: Vogue Splendid Samara-PP (VG-86 2yr)
14th generation of VG or EX

02-02 305d 10,926 471 4.3% 410 3.8% kg



2nd Dam: Parkhurst Powerball Salina P (EX-90 1*)
03-07 365d 16,688 703 4.2% 641 3.8% kg

- #12 GTPI POLLED BULL & RANKS HIGH IN MULTIPLE COUNTRIES
- EXCELS IN ALL AREAS & IDEAL ROBOT PROFILE
- +1.7 DPR 1.8% CALVING EASE A2A2 & BB



905-866-7800 • info@voguecattle.com 

A2P2-PP

VOGUE A2P2-PP

724HO02004 CANM13446574 A2A2 / AB



LUSTER-P x DUKE ELSA-P (VG-85 2yr) x PBALL ERNA P (VG-86 2yr) x MCCUT EXCITED (EX-91 1*)



905-866-7800 • info@voguecattle.com 

724HO02004 A2P2-PP

CANM13446574 **A2A2** / AB
LUSTER-P x DUKE x POWERBALL

12/2020	CDCB SUMMARY GENOMIC			NM\$ +447
Milk	+257	77%R	Fluid Merit \$	+367
Fat	+77	+0.24%	Cheese Merit \$	+485
Protein	+29	+0.07%	Grazing Merit \$	+383
SCS	2.83	75%R	Gestation Len. +0	Fert. Index -0.7
PL	+0.8	73%R	Livability -1.7	Mastitis +1.2
DPR	-1.1	73%R	EFI 9.1%	gEFI 10.1%
HCR	+0.0			
CCR	-0.7		0 Dtrs 0 Herds	100% US



VOGUE A2P2-PP
724HO02004 CANM13446574 **A2A2** / AB
LUSTER-P x DUKE x POWERBALL

12/2020	CALVING SUMMARY			SCE 2.1 %
Sire Calving Ease	2.1%	63%R		0 Obs
Daughter Calving Ease	2.6%	56%R		0 Obs
Sire Stillbirth	5.4%	59%R		0 Obs
Daughter Stillbirth	6.9%	53%R		0 Obs



Dam: Silverridge Duke Elsa-P (VG-85 2yr)
02-02 365d 14,767 603 4.1% 517 3.5% kg
16th Gen VG or EX

12/2020	HA TYPE SUMMARY				TPI +2627	
PTAT +2.31	76%R	UDC+1.84	FLC+0.59	BSC +1.33	0 D /	0 H
					-2	-1
Stature	+2.11	Tall				
Strength	+1.54	Strong				
Body Depth	+1.47	Deep				
Dairy Form	+1.54	Open Rib				
Rump Angle	+1.97	Sloped				
Thurl Width	+2.00	Wide				
Rear Legs-Side	+0.20	Sickle				
Rear Legs-Rear	+0.67	Straight				
Foot Angle	+0.97	Steep				
Feet & Legs Score	+1.08	High				
F. Udder Attachment	+2.45	Strong				
Rear Udder Height	+2.64	High				
Rear Udder Width	+2.66	Wide				
Udder Cleft	+0.84	Strong				
Udder Depth	+1.85	Shallow				
Front Teat Placement	+0.82	Close				
Rear Teat P. Rear	+0.82	Close				
Teat Length	+0.19	Long				



GenerVations Epic (EX-94)
From same family

- #1 GPA-LPI "PP" BULL
- #1 TPI PP BULL >+2.00 PTAT
- HIGH FERTILITY -A2A2 & NO HORNS EVER



905-866-7800 • info@voguecattle.com

CFP-PP

VOGUE CFP-PP *RC

724HO02002 CANM40001156 A2A2 / BB



DRASTIC-P x SPLENDID SAMARA-PP (VG-86 2yr) x POWERBALL SALINA P (EX-90) x UNO SANGARIA (VG-85 2yr 6*)



905-866-7800 • info@voguecattle.com 

724HO02002 CFP-PP *RC

CANM40001156 **A2A2 / BB**
 DRASTIC-P x SPLENDID x POWERBALL

12/2020	CDCB SUMMARY GENOMIC			NM\$ +459
Milk	+100	77%R	Fluid Merit \$	+364
Fat	+76	+0.26%	Cheese Merit \$	+503
Protein	+30	+0.10%	Grazing Merit \$	+416
SCS	3.00	75%R	Gestation Len. -2	Fert. Index -0.4
PL	-0.5	73%R	Livability -1.5	Mastitis -0.3
DPR	-0.9	73%R	EFI 8.5%	gEFI 10.3%
HCR	+1.5			
CCR	-0.8		0 Dtrs 0 Herds	100% US

12/2020	CALVING SUMMARY		SCE 1.9 %
Sire Calving Ease	1.9%	62%R	0 Obs
Daughter Calving Ease	2.1%	56%R	0 Obs
Sire Stillbirth	5.0%	59%R	0 Obs
Daughter Stillbirth	4.2%	54%R	0 Obs

12/2020	HA TYPE SUMMARY				TPI +2583
PTAT +1.42	75%R	UDC+1.85	FLC+0.06	BSC -0.11	0 D / 0 H
Stature	+2.01	Tall			
Strength	+0.12	Strong			
Body Depth	+0.46	Deep			
Dairy Form	+1.82	Open Rib			
Rump Angle	+1.73	Sloped			
Thurl Width	+0.97	Wide			
Rear Legs-Side	+0.61	Sickle			
Rear Legs-Rear	-0.25	Hock In			
Foot Angle	+0.45	Steep			
Feet & Legs Score	+0.71	High			
F. Udder Attachment	+2.14	Strong			
Rear Udder Height	+2.52	High			
Rear Udder Width	+2.49	Wide			
Udder Cleft	+1.01	Strong			
Udder Depth	+2.15	Shallow			
Front Teat Placement	+1.20	Close			
Rear Teat P. Rear	+1.07	Close			
Teat Length	+0.05	Long			



VOGUE CFP-PP *RC
 724HO02002 CANM40001156 **A2A2 / BB**
 DRASTIC-P x SPLENDID x POWERBALL



Dam: Vogue Splendid Samara-PP (VG-86 2yr)
 14th generation of VG or EX
 02-02 305d 10,926 471 4.3% 410 3.8% kg



2nd Dam: Parkhurst Powerball Salina P (EX-90 1*)
 03-07 365d 16,688 703 4.2% 641 3.8% kg

- #1 PP BULL IN AUSTRALIA
- PP (NO HORNS EVER) IDEAL CASEINS (A2A2 – BB & RED CARRIER)
- IDEAL ROBOT PROFILE - CALVING EASE & HUGE COMPONENTS



905-866-7800 • info@voguecattle.com

ENERGIZE-P

VOGUE ENERGIZE-P

724HO02015 CANM40001208 A2A2 / AB



Dam: Vogue Topnotch Eclipse P (GP-83 2yr)

LIMELIGHT-P x TOPNOTCH ECLIPSE P (GP-83 2yr) x DUKE ERIN-P (VG-87) x PBALL ERNA P (VG-86 2yr)



905-866-7800 • info@voguedcattle.com 

724HO02015 ENERGIZE-P

CANM40001208 **A2A2** / AB
LIMELIGHT P x TOPNOTCH x DUKE

12/2020	CDCB SUMMARY GENOMIC			NM\$ +585
Milk	+907	76%R	Fluid Merit \$	+493
Fat	+58	+0.08%	Cheese Merit \$	+629
Protein	+52	+0.08%	Grazing Merit \$	+522
SCS	2.85	74%R	Gestation Len. +0	Fert. Index +0.1
PL	+3.9	73%R	Livability +0.3	Mastitis +1.9
DPR	+0.0	72%R	EFI 9.2%	gEFI 10.4%
HCR	-0.7			
CCR	+1.4		0 Dtrs 0 Herds	100% US



Dam: Vogue Topnotch Eclipse P (GP-83 2yr)
02-00 P198d 9681 378 3.9% 338 3.5% kg

12/2020	CALVING SUMMARY			SCE 2.1 %
Sire Calving Ease	2.1%	61%R		0 Obs
Daughter Calving Ease	2.2%	56%R		0 Obs
Sire Stillbirth	6.0%	57%R		0 Obs
Daughter Stillbirth	6.8%	53%R		0 Obs



2nd Dam: Silverridge Duke Erin P (VG-87)
02-02 365 13,753 491 3.6% 466 3.4% kg

12/2020	HA TYPE SUMMARY					TPI +2760
PTAT +1.84	74%R	UDC+2.19	FLC+0.15	BSC -0.24	0 D / 0 H	
Stature	+0.98	Tall				
Strength	+0.02	Strong				
Body Depth	+0.10	Deep				
Dairy Form	+1.16	Open Rib				
Rump Angle	+0.69	Sloped				
Thurl Width	+0.34	Wide				
Rear Legs-Side	+0.36	Sickle				
Rear Legs-Rear	-0.15	Hock In				
Foot Angle	+0.19	Steep				
Feet & Legs Score	+0.51	High				
F. Udder Attachment	+3.01	Strong				
Rear Udder Height	+2.42	High				
Rear Udder Width	+2.32	Wide				
Udder Cleft	+1.10	Strong				
Udder Depth	+2.30	Shallow				
Front Teat Placement	+1.46	Close				
Rear Teat P. Rear	+1.48	Close				
Teat Length	-0.80	Short				

- DEBUTS AT #13 GTPI POLLED SIRE & TOP 10 OVERALL IN SWITZERLAND
- DOUBLE BRED VOGUE ON TOP & BOTTOM OF PEDIGREE – SAME FAMILIES OF EPIC & LAMBDA
- TREMENDOUS UDDERS ALONG WITH HIGH HEALTH & FERTILITY TRAITS



FOMO-P

VOGUE FOMO-P

724HO02011 CANM40001180 A2A2 / AB



YOLO x VOGUE TOPNOTCH EBONY P (VG-85 2yr) x DUKE ERIN-P (VG-87) x PBALL ERNA P (VG-86 2yr)



905-866-7800 • info@voguecattle.com 

724HO02011 FOMO-P

CANM40001180 **A2A2** / AB
YOLO x TOPNOTCH x DUKE

12/2020	CDCB SUMMARY GENOMIC			NM\$ +536
Milk	+996	76%R	Fluid Merit \$	+499
Fat	+76	+0.13%	Cheese Merit \$	+555
Protein	+39	+0.03%	Grazing Merit \$	+459
SCS	2.84	75%R	Gestation Len. +0	Fert. Index -0.4
PL	+3.0	73%R	Livability -1.0	Mastitis +1.9
DPR	-0.9	73%R	EFI 9.1%	gEFI 10.6%
HCR	+0.8			
CCR	+0.3		0 Dtrs 0 Herds	100% US

12/2020	CALVING SUMMARY			SCE 2.6 %
Sire Calving Ease	2.6%	62%R		0 Obs
Daughter Calving Ease	3.1%	56%R		0 Obs
Sire Stillbirth	6.0%	58%R		0 Obs
Daughter Stillbirth	6.0%	53%R		0 Obs

12/2020	HA TYPE SUMMARY					TPI +2701
PTAT +1.88	75%R	UDC+1.93	FLC+0.22	BSC +1.11	0 D / 0 H	
						-2 -1 0 1 2
Stature	+1.51	Tall				
Strength	+1.13	Strong				
Body Depth	+0.92	Deep				
Dairy Form	+0.84	Open Rib				
Rump Angle	+0.23	Sloped				
Thurl Width	+1.61	Wide				
Rear Legs-Side	-0.50	Posty				
Rear Legs-Rear	+0.60	Straight				
Foot Angle	+0.56	Steep				
Feet & Legs Score	+0.51	High				
F. Udder Attachment	+2.27	Strong				
Rear Udder Height	+2.43	High				
Rear Udder Width	+2.69	Wide				
Udder Cleft	+1.10	Strong				
Udder Depth	+1.89	Shallow				
Front Teat Placement	+1.17	Close				
Rear Teat P. Rear	+1.35	Close				
Teat Length	-0.43	Short				



VOGUE FOMO-P
724HO02011 CANM400011806 **A2A2** / AB
YOLO X TOPNOTCH X DUKE



Dam: Vogue Topnotch Ebony P (VG-85 2yr)
02-03 P120d 11,481 408 3.6% 406 3.5% kg



2nd Dam: Silverridge Duke Erin P (VG-87)
02-02 365 13,753 491 3.6% 466 3.4% kg

- #26 GTPI POLLED SIRE
- OUTCROSS PEDIGREE FROM 17 GENERATIONS VG OR EX DAMS
- HIGH FAT +76 GREAT UDDERS +1.93 & A2A2



ILLUSTRATOR-P

VOGUE ILLUSTRATOR-P *RC

724HO02008 CANM40001172 A2A2 / AB



LUSTER-P x LOYOLA MUDSLIDE-P (VG-87) x KINGBOY MIRANDA P (EX-93) x LADD P MARSHMELLOW (VG-87 7*)



905-866-7800 • info@voguecattle.com 

724HO02008 ILLUSTRATOR-P*RC

CANM40001172 **A2A2** / AB
LUSTER-P x LOYOLA x KINGBOY

12/2020 CDCB SUMMARY GENOMIC			NM\$ +277	
Milk	+866	77%R	Fluid Merit \$	+301
Fat	+48	+0.05%	Cheese Merit \$	+267
Protein	+19	-0.03%	Grazing Merit \$	+217
SCS	2.98	75%R	Gestation Len. +0	Fert. Index -1.4
PL	+0.3	73%R	Livability -3.0	Mastitis +1.9
DPR	-2.0	73%R	EFI 8.4%	gEFI 10.0%
HCR	+0.0			
CCR	-2.1		0 Dtrs 0 Herds	100% US



VOGUE ILLUSTRATOR-P*RC
724HO02008 CANM40001172 **A2A2** / AB
LUSTER-P x LOYOLA x KINGBOY

12/2020 CALVING SUMMARY			SCE 1.9 %	
Sire Calving Ease	1.9%	63%R	0 Obs	
Daughter Calving Ease	2.3%	56%R	0 Obs	
Sire Stillbirth	4.8%	59%R	0 Obs	
Daughter Stillbirth	5.5%	54%R	0 Obs	



Dam: Vogue Loyola Mudslide-P (VG-87)
02-01 305d 10374 413 4.0% 347 3.3% kg

12/2020 HA TYPE SUMMARY			TPI +2432				
PTAT +2.87	76%R	UDC+2.10	FLC+0.69	BSC+0.65	0 D / 0 H		
			-2	-1	0	1	2
Stature	+2.27	Tall	[Bar chart showing +2.27]				
Strength	+1.26	Strong	[Bar chart showing +1.26]				
Body Depth	+1.90	Deep	[Bar chart showing +1.90]				
Dairy Form	+2.80	Open Rib	[Bar chart showing +2.80]				
Rump Angle	+0.28	Sloped	[Bar chart showing +0.28]				
Thurl Width	+2.24	Wide	[Bar chart showing +2.24]				
Rear Legs-Side	+0.40	Sickle	[Bar chart showing +0.40]				
Rear Legs-Rear	+0.65	Straight	[Bar chart showing +0.65]				
Foot Angle	+1.28	Steep	[Bar chart showing +1.28]				
Feet & Legs Score	+1.25	High	[Bar chart showing +1.25]				
F. Udder Attachment	+2.48	Strong	[Bar chart showing +2.48]				
Rear Udder Height	+3.55	High	[Bar chart showing +3.55]				
Rear Udder Width	+3.45	Wide	[Bar chart showing +3.45]				
Udder Cleft	+1.42	Strong	[Bar chart showing +1.42]				
Udder Depth	+1.30	Shallow	[Bar chart showing +1.30]				
Front Teat Placement	+0.66	Close	[Bar chart showing +0.66]				
Rear Teat P. Rear	+0.71	Close	[Bar chart showing +0.71]				
Teat Length	+0.80	Long	[Bar chart showing +0.80]				



2nd Dam: Calbrett Kingboy Miranda-P (EX-93)
02-06 365d 13616 528 3.9% 460 3.4% kg
Top 10 Finalist Cow of Year Impact
#4 RC-Red Impact Cow

- HIGH TYPE RED CARRIER - APPLE FREE PEDIGREE
- IDEAL ROBOT PROFILE ALONG WITH POLLED & A2A2
- TREMENDOUS FERTILITY & CALVING EASE



905-866-7800 • info@voguecattle.com

724H002014 MIRAGE-PP*RC

CANM40001206 A2A2 / AB
MIRAND PP x SPLENDID P x POWERBALL P

12/2020	CDCB SUMMARY GENOMIC			NM\$ +273
Milk	+807	77%R	Fluid Merit \$	+261
Fat	+44	+0.05%	Cheese Merit \$	+278
Protein	+29	+0.01%	Grazing Merit \$	+253
SCS	3.14	74%R	Gestation Len. +1	Fert. Index -0.2
PL	-1.0	73%R	Livability -2.7	Mastitis -0.8
DPR	-0.7	72%R	EFI 8.3%	gEFI 9.7%
HCR	+0.5			
CCR	-0.7		0 Dtrs 0 Herds	100% US



Full Sister: Vogue Mirand Red Wine PP
02-01 305d 10374 413 4.0% 347 3.3% kg
#1 GTPI "PP" Red or RC Female Dec '20

12/2020	CALVING SUMMARY			SCE 2.8 %
Sire Calving Ease	2.8%	61%R		0 Obs
Daughter Calving Ease	3.2%	54%R		0 Obs
Sire Stillbirth	5.5%	52%R		0 Obs
Daughter Stillbirth	5.7%	52%R		0 Obs



Dam: Vogue Splendid Samara-PP (VG-86 2yr)
14th generation of VG or EX
02-02 305d 10,926 471 4.3% 410 3.8% kg

12/2020	HA TYPE SUMMARY					TPI +2461
PTAT +2.64	75%R	UDC+2.37	FLC+0.18	BSC +0.60	0 D / 0 H	
						-2 -1 0 1 2
Stature	+3.49	Tall				
Strength	+0.92	Strong				
Body Depth	+1.44	Deep				
Dairy Form	+2.87	Open Rib				
Rump Angle	+1.40	Sloped				
Thurl Width	+2.16	Wide				
Rear Legs-Side	+0.30	Sickle				
Rear Legs-Rear	+0.04	Straight				
Foot Angle	+1.30	Steep				
Feet & Legs Score	+1.13	High				
F. Udder Attachment	+2.80	Strong				
Rear Udder Height	+3.92	High				
Rear Udder Width	+3.61	Wide				
Udder Cleft	+1.48	Strong				
Udder Depth	+2.88	Shallow				
Front Teat Placement	+1.09	Close				
Rear Teat P. Rear	+1.04	Close				
Teat Length	+1.39	Long				



2nd Dam: Parkhurst Powerball Salina P (EX-90 1*)
03-07 365d 16,688 703 4.2% 641 3.8% kg

- DEBUTS AT # 3 TYPE "PP" SIRE @ +2.64 PTAT
- #4 GPTI "PP" SIRE OVER +2.00 PTAT (4 OF TOP 5 AVAILABLE FROM VOGUE)
- APPLE FREE RED CARRIER WITH TREMENDOUS LINEAR



905-866-7800 • info@voguelcattle.com 

MV-P

VOGUE MV-P

724HO02013 CANM13576115 A1A2 / AB



Dam: Vogue Splendid Margarita-P (VG-85 2yr)

LIMELIGHT-P x SPLENDID MARGARITA-P (VG-85 2yr) x KINGBOY MIRANDA P (EX-93) x LADD P MARSHMELLOW (VG-87 7*)



905-866-7800 • info@voguecattle.com 

724HO02013 MV-P

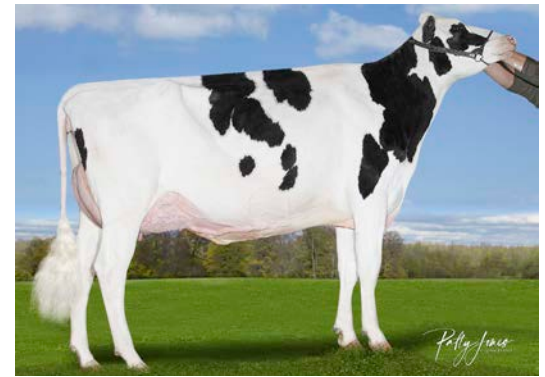
CANM13576115 **A1A2** / AB
LIMELIGHT x SPLENDID x KINGBOY

12/2020	CDCB SUMMARY GENOMIC			NM\$ +302
Milk	+1146	76%R	Fluid Merit \$	+290
Fat	+46	+0.01%	Cheese Merit \$	+308
Protein	+38	+0.01%	Grazing Merit \$	+243
SCS	3.02	74%R	Gestation Len. +0	Fert. Index -0.9
PL	-0.7	73%R	Livability -1.8	Mastitis -0.2
DPR	-1.5	72%R	EFI 8.5%	gEFI 10.4%
HCR	-1.5			
CCR	-2.3		0 Dtrs 0 Herds	100% US

12/2020	CALVING SUMMARY		SCE 2.7 %
Sire Calving Ease	2.7%	62%R	0 Obs
Daughter Calving Ease	2.7%	56%R	0 Obs
Sire Stillbirth	5.5%	57%R	0 Obs
Daughter Stillbirth	6.1%	53%R	0 Obs

12/2020	HA TYPE SUMMARY					TPI +2518
PTAT +2.82	74%R	UDC+2.13	FLC+0.75	BSC +1.58	0 D / 0 H	
Stature	+3.51	Tall				
Strength	+1.92	Strong				
Body Depth	+2.18	Deep				
Dairy Form	+2.46	Open Rib				
Rump Angle	-0.02	High Pins				
Thurl Width	+2.21	Wide				
Rear Legs-Side	-0.35	Posty				
Rear Legs-Rear	+0.91	Straight				
Foot Angle	+1.89	Steep				
Feet & Legs Score	+1.56	High				
F. Udder Attachment	+3.13	Strong				
Rear Udder Height	+3.43	High				
Rear Udder Width	+3.36	Wide				
Udder Cleft	+1.29	Strong				
Udder Depth	+2.32	Shallow				
Front Teat Placement	+1.31	Close				
Rear Teat P. Rear	+0.75	Close				
Teat Length	+0.87	Long				

- #2 TYPE SIRE IN TOP 100 POLLED LIST @ +2.82 PTAT
- OUTCROSS SIRE FROM FAMILIES THAT PRODUCED LAMBDA & MIRAND PP
- TREMENDOUS LINEAR WITH HIGH MILK & PLUS DEVIATIONS & LONGER TEATS



Dam: Vogue Splendid Margarita-P (VG-85 2yr)
02-00 P260d 12993 384 3.0% 399 3.1% kg



Dam: Calbrett Kingboy Miranda-P (EX-93)
02-06 365d 13,616 528 3.9% 460 3.4% kg
#8 Global Cow 2020 Holstein International
#4 Red*RC Impact Cow 2020 Holstein International



905-866-7800 • info@voguecattle.com 

MIRAND-PP

COOMBOONA ZIPIT **MIRAND-PP** *RC
187HO05402 HOAUSM1993596 **A2A2** / AA



ZIPIT-P x KINGBOY MIRANDA P (EX-93) x LADD P MARSHMELLOW (VG-87 8*) x SNOW MUSE P (VG-86 2 yr 5*)



905-866-7800 • info@voguedcattle.com 

187HO05402 MIRAND-PP*RC

HOAUSM1993596 **A2A2** / AA
ZIPIT-P x KINGBOY x LADD P

12/2020 CDCB SUMMARY GENOMIC			NM\$ +248	
Milk	+985	80%R	Fluid Merit \$	+283
Fat	+33	-0.02%	Cheese Merit \$	+233
Protein	+20	-0.04%	Grazing Merit \$	+227
SCS	3.02	78%R	Gestation Len. +0 Fert. Index	-0.1
PL	+0.7	76%R	Livability -2.8 Mastitis	-0.9
DPR	-0.5	76%R	EFI 8.2% gEFI 10.0%	
HCR	+0.8			
CCR	-0.7		0 Dtrs 0 Herds 100% US	

12/2020 CALVING SUMMARY			SCE 2.0 %	
Sire Calving Ease	2.0%	87%R	1220 Obs	
Daughter Calving Ease	2.6%	61%R	0 Obs	
Sire Stillbirth	5.5%	64%R	1220 Obs	
Daughter Stillbirth	5.8%	59%R	0 Obs	

12/2020 HA TYPE SUMMARY			TPI +2406		
PTAT +2.65	79%R	UDC+2.22	FLC+0.59	BSC +0.09	0 D / 0 H
Stature	+2.71	Tall			
Strength	+0.61	Strong			
Body Depth	+1.32	Deep			
Dairy Form	+3.19	Open Rib			
Rump Angle	+0.49	Sloped			
Thurl Width	+2.49	Wide			
Rear Legs-Side	+1.51	Sickle			
Rear Legs-Rear	+0.59	Straight			
Foot Angle	+1.10	Steep			
Feet & Legs Score	+1.33	High			
F. Udder Attachment	+2.11	Strong			
Rear Udder Height	+3.82	High			
Rear Udder Width	+3.71	Wide			
Udder Cleft	+2.01	Strong			
Udder Depth	+1.63	Shallow			
Front Teat Placement	+0.88	Close			
Rear Teat P. Rear	+1.26	Close			
Teat Length	+0.57	Long			



COOMBOONA ZIPIT MIRAND-PP *RC
187HO05402 HOAUSM1993596 **A2A2** / AA
ZIPIT-P x KINGBOY x LADD P



Dam: Calbrett Kingboy Miranda-P (EX-93)
02-06 365d 13,616 528 3.9% 460 3.4% kg
#8 Global Cow 2020 Holstein International
#4 Red*RC Impact Cow 2020 Holstein International



2nd Dam: Snowbiz Ladd P Marshmellow (VG-87 8*)
04-00 351d 14,573 766 5.3% 542 3.7% kg

- TRANSFORMING THE BREED !
- #2 PP TYPE BULL +2.65 PTAT (HIS SON PICASSO-PP IS #1)
- 2ND MOST POPULAR BULL WORLDWIDE – HOLSTEIN INTERNATIONAL BREEDER SURVEY 2020



905-866-7800 • info@voguecattle.com 

NIPIT-PP

VOGUE NIPIT-PP *RC

724HO02005 CANM40001169 A2A2 / BB



HOTSPOT P x SPLENDID SAMARA-PP (VG-86 2yr) x POWERBALL SALINA P (EX-90) x UNO SANGARIA (VG-85 2yr 6*)



905-866-7800 • info@voguedcattle.com 

724HO02005 NIPIT-PP*RC

CANM40001169 **A2A2 / BB**
HOTSPOT P x SPLENDID x POWERBALL

12/2020	CDCB SUMMARY GENOMIC			NM\$ +543
Milk	+638	77%R	Fluid Merit \$	+436
Fat	+76	+0.18%	Cheese Merit \$	+592
Protein	+50	+0.11%	Grazing Merit \$	+487
SCS	3.06	74%R	Gestation Len. +1 Fert. Index	+0.0
PL	+1.6	73%R	Livability -0.9 Mastitis	-1.5
DPR	-0.4	73%R	EFI 8.6% gEFI 10.5%	
HCR	+0.8			
CCR	+0.4		0 Dtrs 0 Herds 100% US	

12/2020	CALVING SUMMARY			SCE 2.6 %
Sire Calving Ease	2.6%	61%R	0 Obs	
Daughter Calving Ease	2.9%	55%R	0 Obs	
Sire Stillbirth	6.0%	55%R	0 Obs	
Daughter Stillbirth	5.9%	53%R	0 Obs	

12/2020	HA TYPE SUMMARY					TPI +2709
PTAT +1.79	74%R	UDC+1.47	FLC+0.58	BSC +0.01	0 D / 0 H	
Stature	+2.22	Tall				
Strength	+0.28	Strong				
Body Depth	+0.92	Deep				
Dairy Form	+2.09	Open Rib				
Rump Angle	+0.63	Sloped				
Thurl Width	+1.21	Wide				
Rear Legs-Side	+0.40	Sickle				
Rear Legs-Rear	+0.23	Straight				
Foot Angle	+0.72	Steep				
Feet & Legs Score	+1.25	High				
F. Udder Attachment	+2.01	Strong				
Rear Udder Height	+1.96	High				
Rear Udder Width	+1.87	Wide				
Udder Cleft	+0.96	Strong				
Udder Depth	+2.36	Shallow				
Front Teat Placement	+0.60	Close				
Rear Teat P. Rear	+0.63	Close				
Teat Length	+0.39	Long				



VOGUE NIPIT-PP*RC
724HO02005 CANM40001169 **A2A2 / BB**
HOTSPOT P x SPLENDID x POWERBALL



Dam: Vogue Splendid Samara-PP (VG-86 2yr)
14th generation of VG or EX
02-02 305d 10,926 471 4.3% 410 3.8% kg



2nd Dam: Parkhurst Powerball Salina P (EX-90 1*)
03-07 365d 16,688 703 4.2% 641 3.8% kg

- #1 GTPI "PP" SIRE
- #2 "PP" SIRE IN CANADA, SWITZERLAND & AUSTRALIA !
- IDEAL ROBOT PROFILE - HUGE COMPENENTS & RED CARRIER



905-866-7800 • info@voguecattle.com

PICASSO-PP

VOGUE PICASSO-PP *RC

724HO02010 CANM40001178 A2A2 / AB



MIRAND-PP x LOYOLA MUDSLIDE-P (VG-87) x KINGBOY MIRANDA P (EX-93) x LADD P MARSHMELLOW (VG-87 7*)



905-866-7800 • info@voguedcattle.com 

724HO02010 PICASSO-PP *RC

CANM40001178 **A2A2** / AB
MIRAND-PP x LOYOLA x KINGBOY

12/2020	CDCB SUMMARY GENOMIC			NM\$ +118
Milk	+1033	77%R	Fluid Merit \$	+146
Fat	+22	-0.06%	Cheese Merit \$	+104
Protein	+24	-0.03%	Grazing Merit \$	+47
SCS	3.12	75%R	Gestation Len. -1	Fert. Index -2.6
PL	-1.0	73%R	Livability -3.8	Mastitis -1.8
DPR	-3.4	73%R	EFI 8.2%	gEFI 10.4%
HCR	-0.7			
CCR	-3.3		0 Dtrs 0 Herds	100% US

12/2020	CALVING SUMMARY			SCE 2.4 %
Sire Calving Ease	2.4%	61%R	0 Obs	
Daughter Calving Ease	2.2%	55%R	0 Obs	
Sire Stillbirth	5.3%	53%R	0 Obs	
Daughter Stillbirth	5.1%	53%R	0 Obs	

12/2020	HA TYPE SUMMARY					TPI +2247	
PTAT +2.92	76%R	UDC+2.02	FLC+0.79	BSC+0.64	0 D / 0 H		
			-2	-1	0	1	2
Stature	+3.49	Tall	[Bar]				
Strength	+1.24	Strong	[Bar]				
Body Depth	+2.18	Deep	[Bar]				
Dairy Form	+3.58	Open Rib	[Bar]				
Rump Angle	+0.27	Sloped	[Bar]				
Thurl Width	+2.66	Wide	[Bar]				
Rear Legs-Side	+0.57	Sickle	[Bar]				
Rear Legs-Rear	+0.85	Straight	[Bar]				
Foot Angle	+1.34	Steep	[Bar]				
Feet & Legs Score	+1.66	High	[Bar]				
F. Udder Attachment	+2.12	Strong	[Bar]				
Rear Udder Height	+4.09	High	[Bar]				
Rear Udder Width	+3.67	Wide	[Bar]				
Udder Cleft	+2.03	Strong	[Bar]				
Udder Depth	+1.57	Shallow	[Bar]				
Front Teat Placement	+0.34	Close	[Bar]				
Rear Teat P. Rear	+0.81	Close	[Bar]				
Teat Length	+1.18	Long	[Bar]				



VOGUE PICASSO-PP *RC
724HO02010 CANM40001178 **A2A2** / AB
MIRAND-PP x LOYOLA x KINGBOY



Dam: Vogue Loyola Mudslide-P (VG-87)
02-01 305d 10374 413 4.0% 347 3.3% kg



Dam: Calbrett Kingboy Miranda-P (EX-93)
02-06 365d 13,616 528 3.9% 460 3.4% kg
#8 Global Cow 2020 Holstein International
#4 Red*RC Impact Cow 2020 Holstein International

- #1 TYPE "PP" BULL IN CANADA +16 CONF. & USA +2.92 PTAT
- HIGH PRODUCTION WITH IDEAL ROBOT PROFILE
- A2A2 - RED CARRIER & APPLE FREE PEDIGREE



PJ-P

VOGUE PJ-P

724HO02006 CANM13446573 **A2A2** / AB



HOTSPOT P x POWERBALL SALINA P (EX-90) x UNO SANGARIA (VG-85 2yr 6*) x PLANET SILK (EX-90 10*)



905-866-7800 • info@voguedcattle.com 

724HO02006 PJ-P

CANM13446573 **A2A2** / AB
HOTSPOT P x POWERBALL x UNO

12/2020 CDCB SUMMARY GENOMIC			NM\$ +539	
Milk	+698	77%R	Fluid Merit \$	+426
Fat	+72	+0.16%	Cheese Merit \$	+591
Protein	+53	+0.11%	Grazing Merit \$	+498
SCS	2.99	75%R	Gestation Len. +0	Fert. Index +0.7
PL	+1.4	74%R	Livability -1.8	Mastitis -0.2
DPR	+0.0	73%R	EFI 8.6%	gEFI 11.1%
HCR	+1.5			
CCR	+0.8		0 Dtrs 0 Herds	100% US



VOGUE PJ-P
724HO02006 CANM13446573 **A2A2** / AB
HOTSPOT P x POWERBALL x UNO

12/2020 CALVING SUMMARY			SCE 1.8 %	
Sire Calving Ease	1.8%	61%R	0 Obs	
Daughter Calving Ease	2.0%	55%R	0 Obs	
Sire Stillbirth	5.0%	55%R	0 Obs	
Daughter Stillbirth	5.7%	54%R	0 Obs	



Dam: Parkhurst Powerball Salina P (EX-90)
03-07 365d 16,688 703 4.2% 641 3.8% kg
13th Gen VG or EX

12/2020 HA TYPE SUMMARY			TPI +2704		
PTAT +1.44	74%R	UDC+1.34	FLC-0.22	BSC-0.22	0 D / 0 H
Stature	+2.01	Tall			
Strength	+0.15	Strong			
Body Depth	+0.71	Deep			
Dairy Form	+2.20	Open Rib			
Rump Angle	+1.36	Sloped			
Thurl Width	+1.11	Wide			
Rear Legs-Side	+1.25	Sickle			
Rear Legs-Rear	-0.46	Hock In			
Foot Angle	+0.20	Steep			
Feet & Legs Score	+0.47	High			
F. Udder Attachment	+1.59	Strong			
Rear Udder Height	+1.83	High			
Rear Udder Width	+2.03	Wide			
Udder Cleft	+0.96	Strong			
Udder Depth	+1.65	Shallow			
Front Teat Placement	+1.33	Close			
Rear Teat P. Rear	+1.02	Close			
Teat Length	-0.15	Short			



Sister: Vogue Splendid Samara-PP (VG-86 2yr)
14th generation of VG or EX
02-02 305d 10,926 471 4.3% 410 3.8% kg

- TOP 25 GTPI POLLED SIRE
- HIGHLY RANKED IN MULTIPLE COUNTRIES
- NO HOLES – EASY TO USE PROFILE - EXCELS IN ALL FUNCTIONAL TRAITS



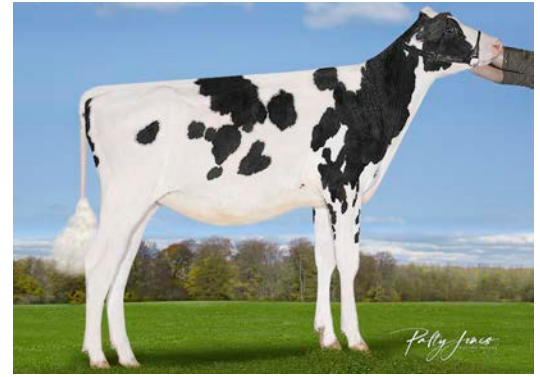
724H002012 RESET-PP

CANM40001202 **A2A2** / AB
LIMELIGHT P x BIGHIT P x DUKE

12/2020	CDCB SUMMARY GENOMIC			NM\$ +460
Milk	+845	76%R	Fluid Merit \$	+406
Fat	+71	+0.13%	Cheese Merit \$	+485
Protein	+40	+0.05%	Grazing Merit \$	+370
SCS	2.94	74%R	Gestation Len. +1	Fert. Index -1.7
PL	+0.7	73%R	Livability -1.7	Mastitis +1.4
DPR	-2.2	72%R	EFI 9.1%	gEFI 10.1%
HCR	-1.1			
CCR	-2.5		0 Dtrs 0 Herds	100% US

12/2020	CALVING SUMMARY		SCE 2.5 %
Sire Calving Ease	2.5%	61%R	0 Obs
Daughter Calving Ease	2.4%	56%R	0 Obs
Sire Stillbirth	5.6%	57%R	0 Obs
Daughter Stillbirth	6.5%	53%R	0 Obs

12/2020	HA TYPE SUMMARY				TPI +2608
PTAT +2.03	74%R	UDC+1.94	FLC+0.40	BSC -0.04	0 D / 0 H
					-2 -1 0 1 2
Stature	+1.65	Tall			
Strength	+0.47	Strong			
Body Depth	+0.88	Deep			
Dairy Form	+2.14	Open Rib			
Rump Angle	+1.34	Sloped			
Thurl Width	+1.02	Wide			
Rear Legs-Side	+0.70	Sickle			
Rear Legs-Rear	+0.45	Straight			
Foot Angle	+0.45	Steep			
Feet & Legs Score	+0.83	High			
F. Udder Attachment	+2.75	Strong			
Rear Udder Height	+2.52	High			
Rear Udder Width	+2.37	Wide			
Udder Cleft	+0.74	Strong			
Udder Depth	+2.16	Shallow			
Front Teat Placement	+0.93	Close			
Rear Teat P. Rear	+0.77	Close			
Teat Length	-0.58	Short			



Full Sister: Vogue Limelight Espresso PP
#3 GTPI "PP" Female Dec '20



Dam: Vogue Bight Espresso PP
Fresh and off to a great start!



2nd Dam: Silverridge Duke Elsa-P (VG-85 2yr)
02-02 365d 14,767 603 4.1% 517 3.5% kg
16th Gen VG or EX

- #2 GTPI "PP" SIRE OVER +2.00 PTAT
- TRANSMITTING HUGE COMPONENTS FROM WELL ATTACHED UDDERS
- A2A2 & NO HORNS EVER



905-866-7800 • info@voguecattle.com 

WEBCAST-PP

VOGUE WEBCAST-PP *RC

724HO02009 CANM40001174 A2A2 / BB



WEBSTER-P x LOYOLA MACY RED-PP (VG-88) x KINGBOY MIRANDA P (EX-93) x LADD P MARSHMELLOW (VG-87 7*)



905-866-7800 • info@voguedcattle.com 

724HO02009 **WEBCAST-PP *RC**

724HO02009 CANM40001174 **A2A2 / BB**
 WEBSTER x LOYOLA x KINGBOY

12/2020 CDCB SUMMARY GENOMIC			NM\$ +361	
Milk	+968	77%R	Fluid Merit \$	+363
Fat	+45	+0.03%	Cheese Merit \$	+362
Protein	+27	-0.01%	Grazing Merit \$	+285
SCS	2.81	74%R	Gestation Len. +0	Fert. Index -1.2
PL	+1.9	73%R	Livability -2.4	Mastitis +2.9
DPR	-1.8	73%R	EFI 8.3%	gEFI 9.8%
HCR	-0.9			
CCR	-2.5		0 Dtrs 0 Herds	100% US

12/2020 CALVING SUMMARY			SCE 1.3 %	
Sire Calving Ease	1.3%	62%R	0 Obs	
Daughter Calving Ease	1.7%	56%R	0 Obs	
Sire Stillbirth	4.5%	59%R	0 Obs	
Daughter Stillbirth	5.3%	53%R	0 Obs	

12/2020 HA TYPE SUMMARY			TPI +2495		
PTAT +1.78	74%R	UDC+2.10	FLC+1.04	BSC +0.30	0 D / 0 H

Value	Quality	Visual
Stature	+0.80 Tall	[Bar]
Strength	+0.27 Strong	[Bar]
Body Depth	+0.25 Deep	[Bar]
Dairy Form	+0.72 Open Rib	[Bar]
Rump Angle	-1.54 High Pins	[Bar]
Thurl Width	+1.41 Wide	[Bar]
Rear Legs-Side	-0.68 Posty	[Bar]
Rear Legs-Rear	+1.21 Straight	[Bar]
Foot Angle	+1.19 Steep	[Bar]
Feet & Legs Score	+1.12 High	[Bar]
F. Udder Attachment	+2.94 Strong	[Bar]
Rear Udder Height	+2.52 High	[Bar]
Rear Udder Width	+1.85 Wide	[Bar]
Udder Cleft	+0.84 Strong	[Bar]
Udder Depth	+2.36 Shallow	[Bar]
Front Teat Placement	+0.64 Close	[Bar]
Rear Teat P. Rear	+0.30 Close	[Bar]
Teat Length	+0.21 Long	[Bar]

- NO HORNS – IDEAL CASEINS – RED CARRIER
- HIGH TYPE IN GERMANY -FRANCE & HOLLAND
- DAM IS RED SISTER TO GLOBAL SENSATION “MIRAND PP”



VOGUE WEBCAST-PP *RC
 724HO02009 CANM40001174 **A2A2 / BB**
 WEBSTER x LOYOLA x KINGBOY



Dam: Vogue Loyola Macy Red-PP (VG-88)
 02-02 365d 12,067 536 4.4% 445 3.7% kg
 Sister to Mirand PP



2nd Dam: Calbrett Kingboy Miranda-P (EX-93)
 02-06 365d 13,616 528 3.9% 460 3.4% kg
 #8 Global Cow 2020 Holstein International
 #4 Red*RC Impact Cow 2020 Holstein International

